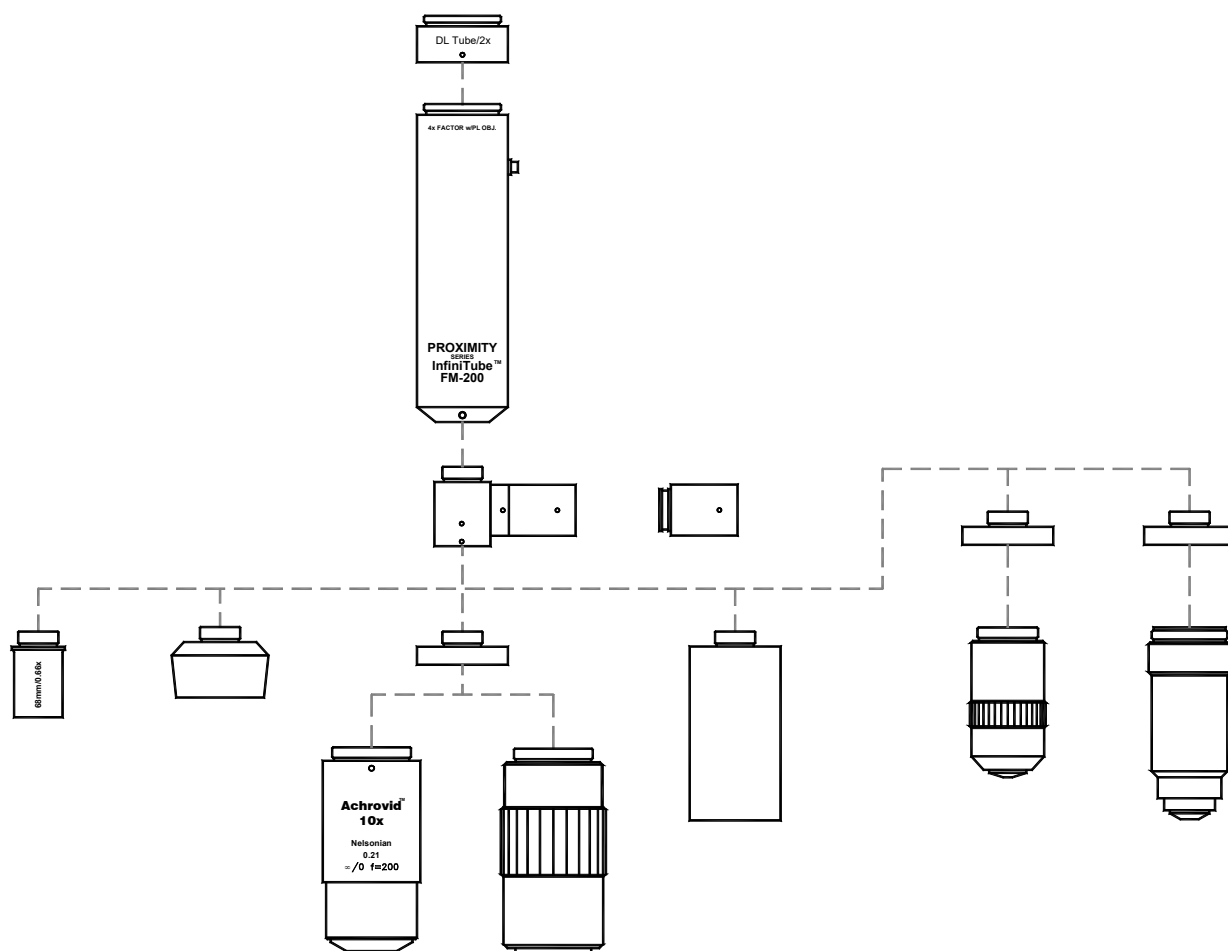
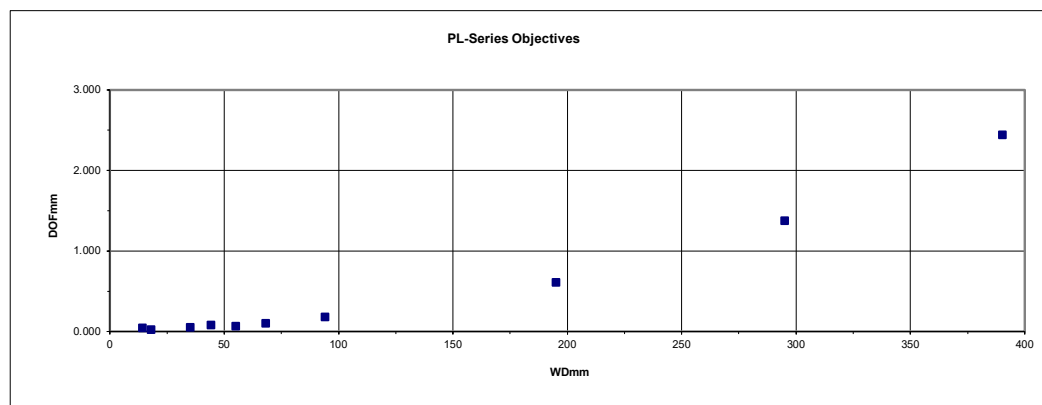
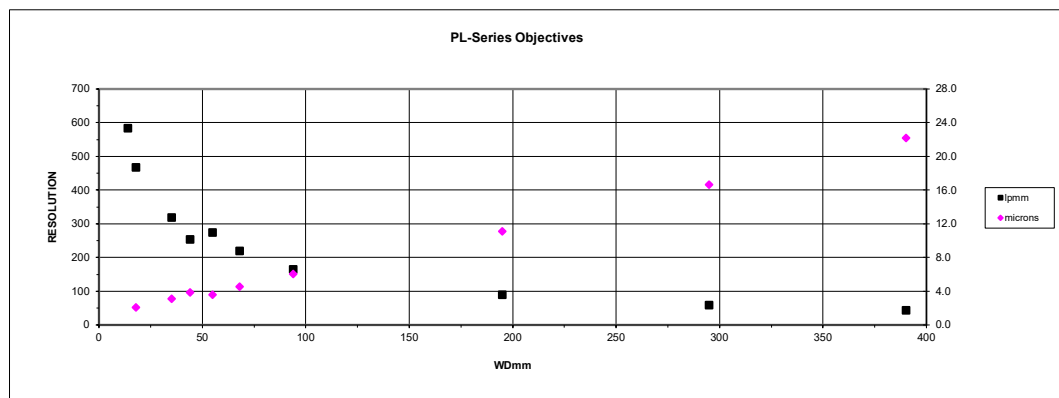
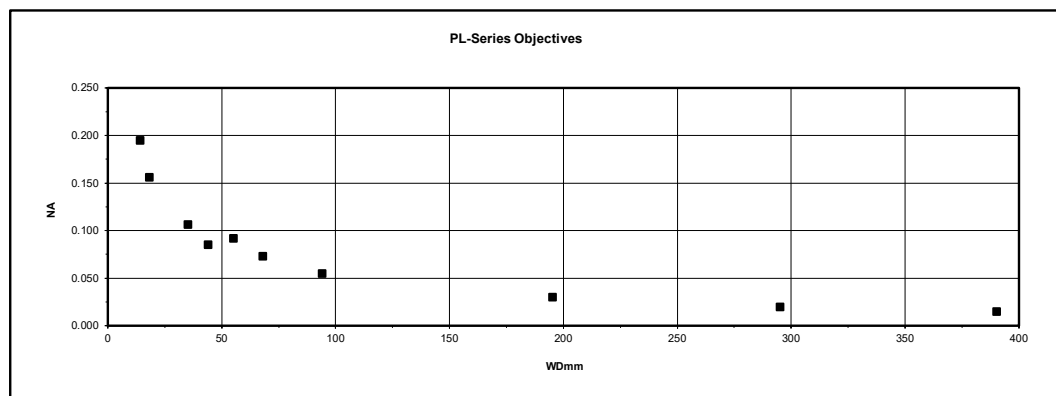


PROXIMITY SERIES: InfiniTube™ In-Line Assembly™ FM-Series



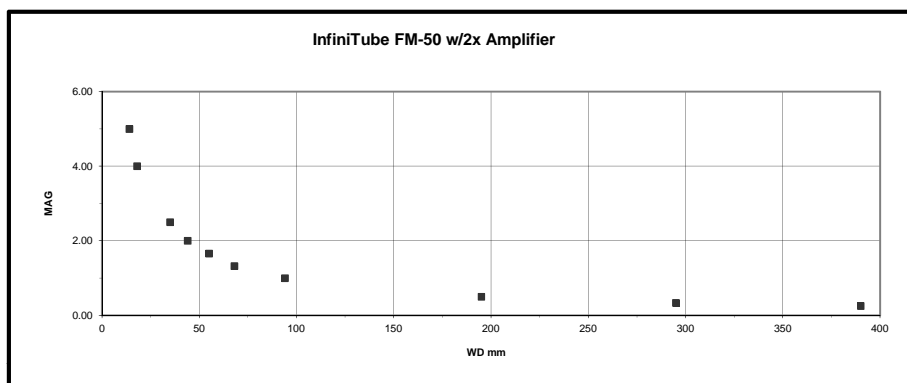
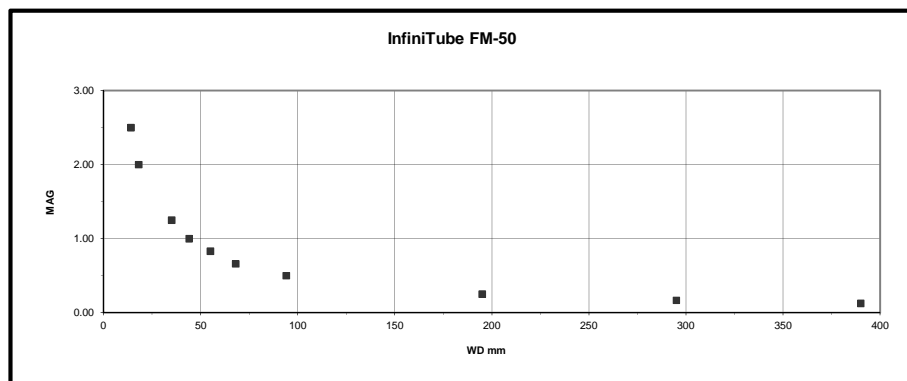
PL-SERIES OBJECTIVES OPTICAL DATA

| PL-Series Objectives | | PL-14 | PL-18 | PL-35 | PL-44 | PL-55 | PL-68 | PL-94 | PL/FD-195 | PL/FD-295 | PL/FD-390 |
|----------------------|-----------------------|-------|-------|-------|-------|-------|-------|-------|-----------|-----------|-----------|
| Data | WD mm | 14 | 18 | 35 | 44 | 55 | 68 | 94 | 195 | 295 | 390 |
| | NA | 0.195 | 0.156 | 0.106 | 0.085 | 0.092 | 0.073 | 0.055 | 0.030 | 0.020 | 0.015 |
| | Resolution (lines/mm) | 585 | 468 | 319 | 255 | 275 | 220 | 165 | 90 | 60 | 45 |
| | Resolution (microns) | 1.7 | 2.1 | 3.1 | 3.9 | 3.6 | 4.5 | 6.1 | 11.1 | 16.7 | 22.2 |
| | DOF mm | 0.043 | 0.022 | 0.048 | 0.076 | 0.065 | 0.102 | 0.182 | 0.611 | 1.375 | 2.44 |
| | | | | | | | | | | | |



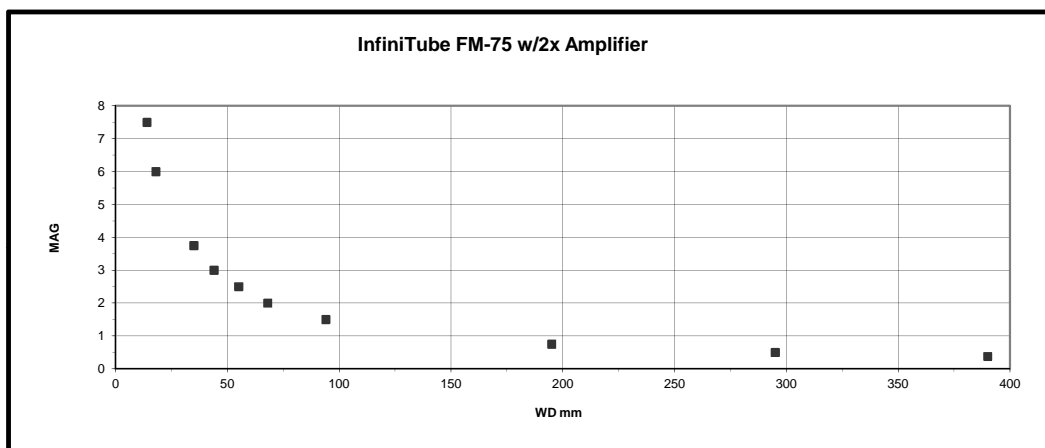
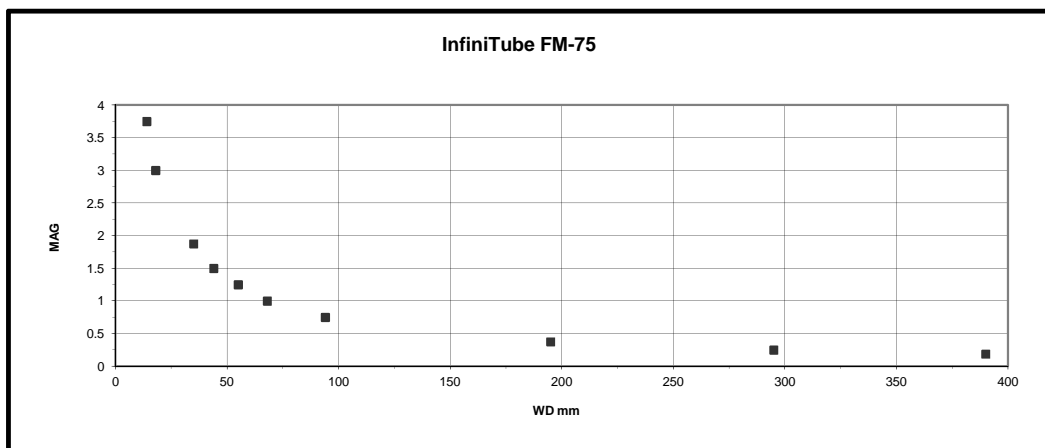
INFINITUBE FM-50

| PL-Series Objectives | | PL-14 | PL-18 | PL-35 | PL-44 | PL-55 | PL-68 | PL-94 | PL/FD-195 | PL/FD-295 | PL/FD-390 |
|-------------------------|-----------------|-------|-------|-------|-------|-------|-------|-------|-----------|-----------|-----------|
| InfiniTube FM-50 | WD mm | 14 | 18 | 35 | 44 | 55 | 68 | 94 | 195 | 295 | 390 |
| | Mag | 2.50 | 2.00 | 1.25 | 1.00 | 0.83 | 0.66 | 0.50 | 0.25 | 0.167 | 0.125 |
| | FOV 1/2" | 2.6 | 3.2 | 5.1 | 6.4 | 7.7 | 9.7 | 12.8 | 25.6 | 38.3 | 51.2 |
| | FOV 1/3" | 1.9 | 2.4 | 3.8 | 4.8 | 5.8 | 7.3 | 9.6 | 19.2 | 28.7 | 38.4 |
| | | | | | | | | | | | |
| 2x Amplifier | WD mm | 14 | 18 | 35 | 44 | 55 | 68 | 94 | 195 | 295 | 390 |
| | Mag | 5.00 | 4.00 | 2.50 | 2.00 | 1.66 | 1.32 | 1.00 | 0.50 | 0.33 | 0.25 |
| | FOV 1/2" | 1.3 | 1.6 | 2.6 | 3.2 | 3.9 | 4.8 | 6.4 | 12.8 | 19.2 | 25.6 |
| | FOV 1/3" | 1.0 | 1.2 | 1.9 | 2.4 | 2.9 | 3.6 | 4.8 | 9.6 | 14.4 | 19.2 |



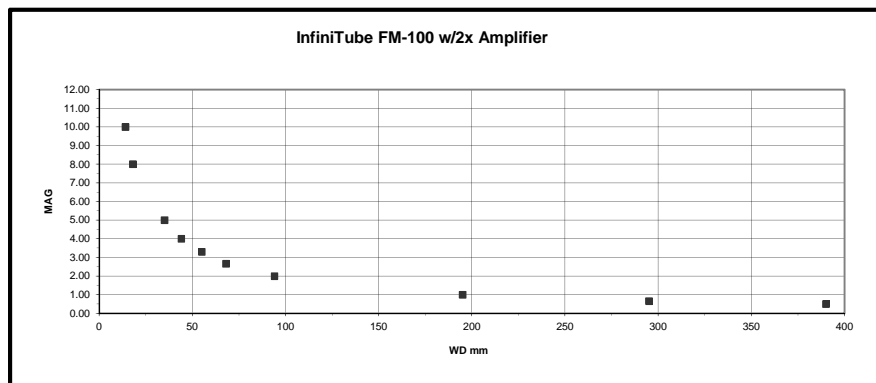
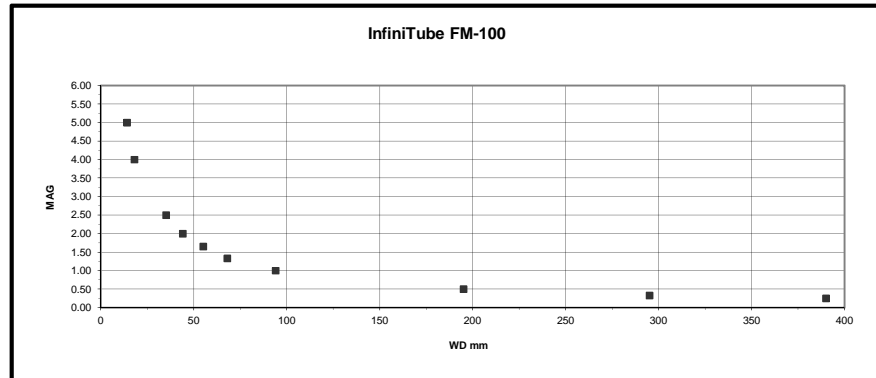
INFINITUBE FM-75

| PL-Series Objectives | | PL-14 | PL-18 | PL-35 | PL-44 | PL-55 | PL-68 | PL-94 | PL/FD-195 | PL/FD-295 | PL/FD-390 |
|----------------------|----------|-------|-------|-------|-------|-------|-------|-------|-----------|-----------|-----------|
| InfiniTube FM-75 | WD mm | 14 | 18 | 35 | 44 | 55 | 68 | 94 | 195 | 295 | 390 |
| | Mag | 3.75 | 3.00 | 1.875 | 1.50 | 1.25 | 1.00 | 0.75 | 0.375 | 0.25 | 0.188 |
| | FOV 1/2" | 1.7 | 2.1 | 3.4 | 4.3 | 5.1 | 6.4 | 8.5 | 17.1 | 25.6 | 34.0 |
| | FOV 1/3" | 1.3 | 1.6 | 2.6 | 3.2 | 3.8 | 4.8 | 6.4 | 12.8 | 19.2 | 25.5 |
| | | | | | | | | | | | |
| 2x Amplifier | WD mm | 14 | 18 | 35 | 44 | 55 | 68 | 94 | 195 | 295 | 390 |
| | Mag | 7.5 | 6.00 | 3.75 | 3.00 | 2.50 | 2.00 | 1.50 | 0.75 | 0.50 | 0.38 |
| | FOV 1/2" | 0.9 | 1.1 | 1.7 | 2.1 | 2.6 | 3.2 | 4.3 | 8.5 | 12.8 | 17.0 |
| | FOV 1/3" | 0.6 | 0.8 | 1.3 | 1.6 | 1.9 | 2.4 | 3.2 | 6.4 | 9.6 | 12.8 |



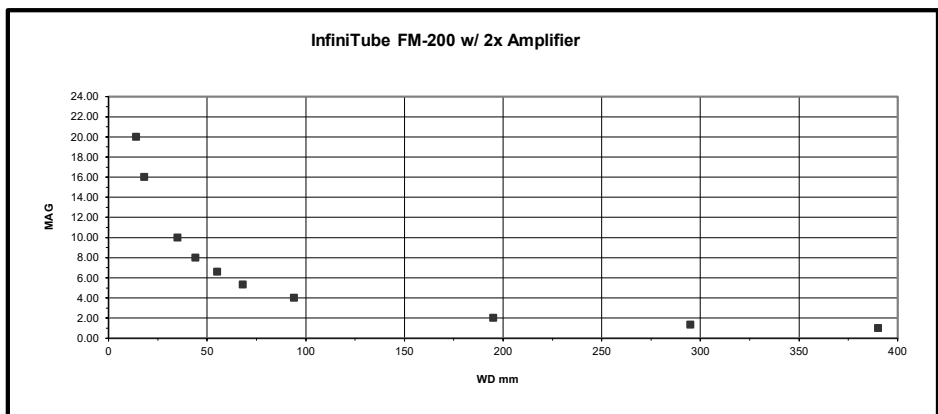
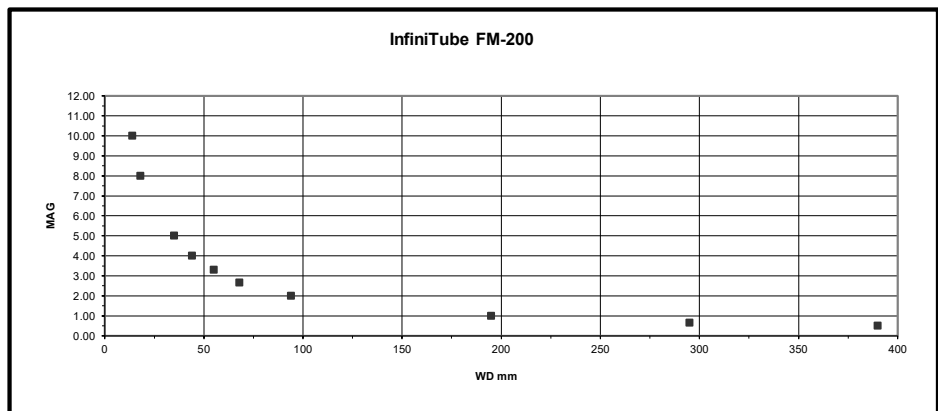
INFINITUBE FM-100

| PL-Series Objectives | | PL-14 | PL-18 | PL-35 | PL-44 | PL-55 | PL-68 | PL-94 | PL/FD-195 | PL/FD-295 | PL/FD-390 |
|----------------------|----------|-------|-------|-------|-------|-------|-------|-------|-----------|-----------|-----------|
| InfiniTube FM-100 | WD mm | 14 | 18 | 35 | 44 | 55 | 68 | 94 | 195 | 295 | 390 |
| | Mag | 5.00 | 4.00 | 2.50 | 2.00 | 1.65 | 1.33 | 1.00 | 0.50 | 0.33 | 0.25 |
| | FOV 1/2" | 1.3 | 1.6 | 2.6 | 3.2 | 3.9 | 4.8 | 6.4 | 12.8 | 19.4 | 25.6 |
| | FOV 1/3" | 1.0 | 1.2 | 1.9 | 2.4 | 2.9 | 3.6 | 4.8 | 9.6 | 14.5 | 19.2 |
| | | | | | | | | | | | |
| 2x Amplifier | WD mm | 14 | 18 | 35 | 44 | 55 | 68 | 94 | 195 | 295 | 390 |
| | Mag | 10.00 | 8.00 | 5.00 | 4.00 | 3.30 | 2.66 | 2.00 | 1.00 | 0.66 | 0.50 |
| | FOV 1/2" | 0.6 | 0.8 | 1.3 | 1.6 | 1.9 | 2.4 | 3.2 | 6.4 | 9.7 | 12.8 |
| | FOV 1/3" | 0.5 | 0.6 | 1.0 | 1.2 | 1.5 | 1.8 | 2.4 | 4.8 | 7.3 | 9.6 |

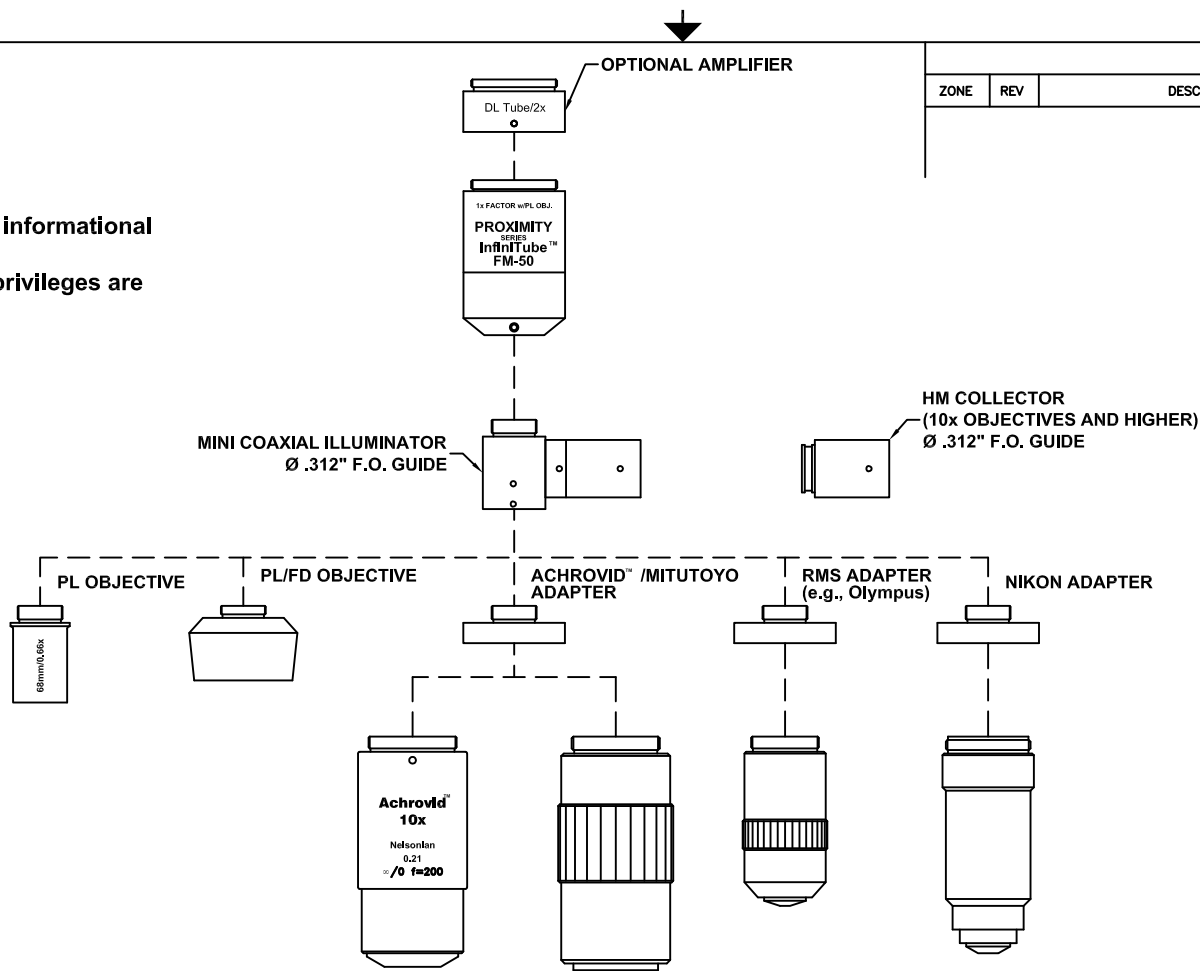


INFINITUBE FM-200

| PL-Series Objectives | | PL-14 | PL-18 | PL-35 | PL-44 | PL-55 | PL-68 | PL-94 | PL/FD-195 | PL/FD-295 | PL/FD-390 |
|----------------------|----------|-------|-------|-------|-------|-------|-------|-------|-----------|-----------|-----------|
| InfiniTube FM-200 | WD mm | 14 | 18 | 35 | 44 | 55 | 68 | 94 | 195 | 295 | 390 |
| | Mag | 10.00 | 8.00 | 5.00 | 4.00 | 3.30 | 2.66 | 2.00 | 1.00 | 0.66 | 0.5 |
| | FOV 1/2" | 0.6 | 0.8 | 1.3 | 1.6 | 1.9 | 2.4 | 3.2 | 6.4 | 9.7 | 12.8 |
| | FOV 1/3" | 0.5 | 0.6 | 1.0 | 1.2 | 1.5 | 1.8 | 2.4 | 4.8 | 7.3 | 9.6 |
| | | | | | | | | | | | |
| 2x Amplifier | WD mm | 14 | 18 | 35 | 44 | 55 | 68 | 94 | 195 | 295 | 390 |
| | Mag | 20.00 | 16.00 | 10.00 | 8.00 | 6.60 | 5.32 | 4.00 | 2.00 | 1.32 | 1.00 |
| | FOV 1/2" | 0.3 | 0.4 | 0.6 | 0.8 | 1.0 | 1.2 | 1.6 | 3.2 | 4.8 | 6.4 |
| | FOV 1/3" | 0.2 | 0.3 | 0.5 | 0.6 | 0.7 | 0.9 | 1.2 | 2.4 | 3.6 | 4.8 |



This drawing is for informational purposes only. No other rights or privileges are granted or implied.



| REVISIONS | | | | |
|-----------|-----|-------------|------|----------|
| ZONE | REV | DESCRIPTION | DATE | APPROVED |

ALL DIM ARE mm [inches] AND ARE FOR REFERENCE ONLY AND ARE SUBJECT TO CHANGE.

Date: 01/29/08 MB

Modified:

INFINITY Photo-Optical Company
www.infinity-usa.com

InfiniTube™ FM-50 SYSTEM

| | | | |
|----------------------|----------|------------------------|----------|
| SIZE B | FSCM NO. | DWG NO. - | REV - |
| SCALE NONE | - | SHEET 1 OF 1 | |

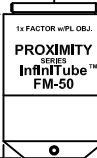
This drawing is for informational purposes only. No other rights or privileges are granted or implied.

OPTIONAL AMPLIFIER



12.00 [.472"]

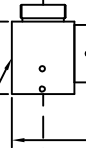
42.50 [1.673"]



Ø30.00 [Ø1.181"]

21.40 [.843"]

MINI COAXIAL ILLUMINATOR
Ø .312" F.O. GUIDE



46.60 [1.835"]

Ø17.00 [Ø.669"]

HM COLLECTOR
(10x OBJECTIVES AND HIGHER)
Ø .312" F.O. GUIDE



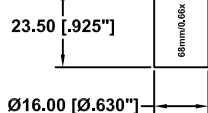
PL OBJECTIVE

PL/FD OBJECTIVE

ACHROVID™ /MITUTOYO ADAPTER

RMS ADAPTER
(e.g., Olympus)

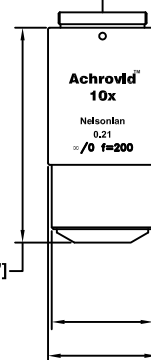
NIKON ADAPTER



18.50 [.728"]

Ø31.95 [Ø1.258"]

6.00 [.236"]



63.50 [2.500"]

Ø30.00 [Ø1.181"]

Ø32.20 [Ø1.268"]

ALL DIM ARE mm [inches] AND ARE FOR REFERENCE ONLY AND ARE SUBJECT TO CHANGE.

Date: 01/29/08 MB

Modified:

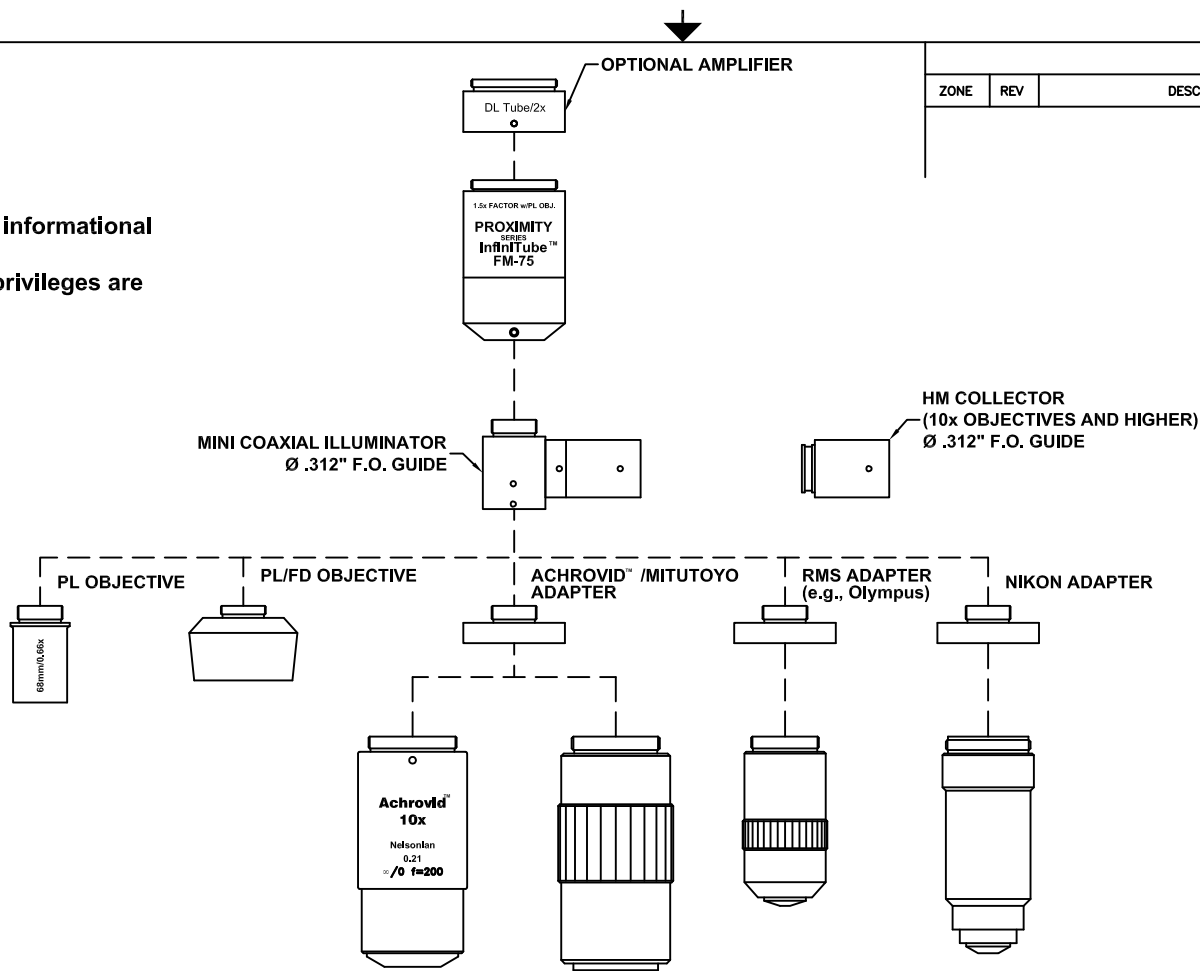
INFINITY Photo-Optical Company
www.infinity-usa.com

**InfiniTube™ FM-50 SYSTEM
DIMENSIONS**

| SIZE | FSCM NO. | DWG NO. | REV |
|-------|----------|---------|--------------|
| B | | - | - |
| SCALE | NONE | - | SHEET 1 OF 1 |

| REVISIONS | | | | |
|-----------|-----|-------------|------|----------|
| ZONE | REV | DESCRIPTION | DATE | APPROVED |

This drawing is for informational purposes only. No other rights or privileges are granted or implied.



| REVISIONS | | | | |
|-----------|-----|-------------|------|----------|
| ZONE | REV | DESCRIPTION | DATE | APPROVED |

ALL DIM ARE mm
[inches] AND ARE FOR
REFERENCE ONLY AND
ARE SUBJECT TO
CHANGE.

INFINITY Photo-Optical Company
www.infinity-usa.com

InfiniTube™ FM-75 SYSTEM

Date: 01/29/08 MB

Modified:

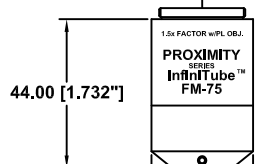
| SIZE | FSCM NO. | DWG NO. | REV |
|-------|----------|---------|--------------|
| B | | - | - |
| SCALE | NONE | - | SHEET 1 OF 1 |

This drawing is for informational purposes only. No other rights or privileges are granted or implied.

OPTIONAL AMPLIFIER



12.00 [.472"]



44.00 [1.732"]

Ø30.00 [Ø1.181"]

21.40 [.843"]

MINI COAXIAL ILLUMINATOR
Ø .312" F.O. GUIDE



46.60 [1.835"]

Ø17.00 [Ø.669"]

HM COLLECTOR
(10x OBJECTIVES AND HIGHER)
Ø .312" F.O. GUIDE



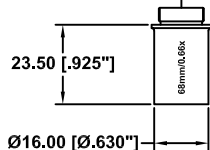
PL OBJECTIVE

PL/FD OBJECTIVE

ACHROVID™ /MITUTOYO ADAPTER

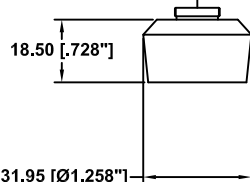
RMS ADAPTER
(e.g., Olympus)

NIKON ADAPTER



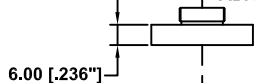
23.50 [.925"]

Ø16.00 [Ø.630"]

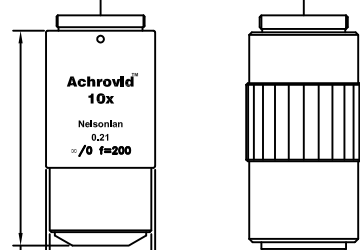


18.50 [.728"]

Ø31.95 [Ø1.258"]



6.00 [.236"]



63.50 [2.500"]

Ø30.00 [Ø1.181"]

Ø32.20 [Ø1.268"]

ALL DIM ARE mm [inches] AND ARE FOR REFERENCE ONLY AND ARE SUBJECT TO CHANGE.

Date: 01/29/08 MB

Modified:

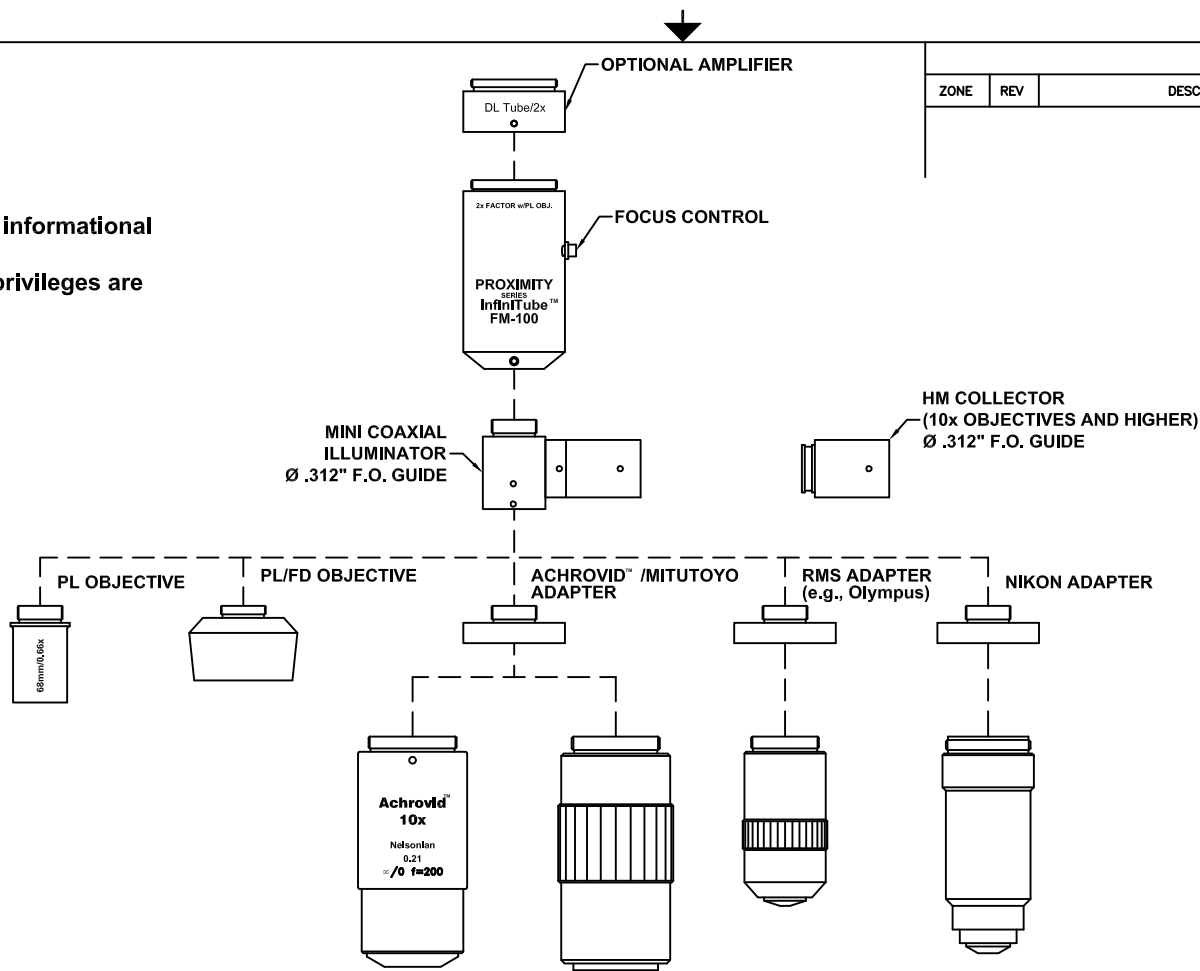
INFINITY Photo-Optical Company
www.infinity-usa.com

**InfiniTube™ FM-75 SYSTEM
DIMENSIONS**

| SIZE | FSCM NO. | DWG NO. | REV |
|-------|----------|---------|--------------|
| B | | - | - |
| SCALE | NONE | - | SHEET 1 OF 1 |

| REVISIONS | | | | |
|-----------|-----|-------------|------|----------|
| ZONE | REV | DESCRIPTION | DATE | APPROVED |

This drawing is for informational purposes only. No other rights or privileges are granted or implied.



| REVISIONS | | | | |
|-----------|-----|-------------|------|----------|
| ZONE | REV | DESCRIPTION | DATE | APPROVED |

ALL DIM ARE mm
[inches] AND ARE FOR
REFERENCE ONLY AND
ARE SUBJECT TO
CHANGE.

INFINITY Photo-Optical Company
www.infinity-usa.com

InfiniTube™ FM-100 SYSTEM

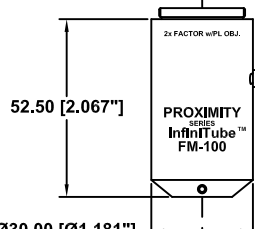
| | | | | | |
|-----------------------|--|---------------|----------|-----------------|----------|
| Date: 03/25/04 MB | | SIZE B | FSCM NO. | DWG NO. - | REV B |
| Modified: 05/13/05 MB | | SCALE NONE | - | SHEET 1 OF 1 | |

This drawing is for informational purposes only. No other rights or privileges are granted or implied.

OPTIONAL AMPLIFIER



12.00 [.472"]



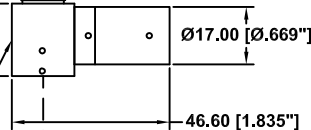
FOCUS CONTROL

52.50 [2.067"]

Ø30.00 [Ø1.181"]

21.40 [.843"]

MINI COAXIAL ILLUMINATOR
Ø .312" F.O. GUIDE



46.60 [1.835"]

HM COLLECTOR
(10x OBJECTIVES AND HIGHER)
Ø .312" F.O. GUIDE



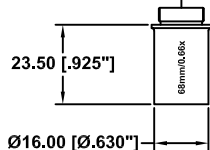
PL OBJECTIVE

PL/FD OBJECTIVE

ACHROVID™ /MITUTOYO ADAPTER

RMS ADAPTER
(e.g., Olympus)

NIKON ADAPTER



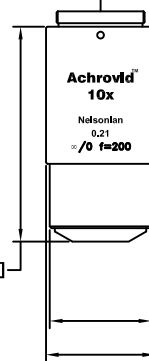
23.50 [.925"]

Ø16.00 [Ø.630"]

18.50 [.728"]

Ø31.95 [Ø1.258"]

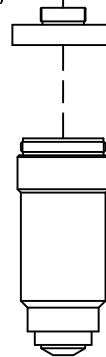
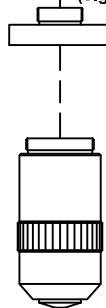
6.00 [.236"]



63.50 [2.500"]

Ø30.00 [Ø1.181"]

Ø32.20 [Ø1.268"]



REVISIONS

| ZONE | REV | DESCRIPTION | DATE | APPROVED |
|------|-----|-------------|------|----------|
|------|-----|-------------|------|----------|

ALL DIM ARE mm [inches] AND ARE FOR REFERENCE ONLY AND ARE SUBJECT TO CHANGE.

Date: 03/25/04 MB

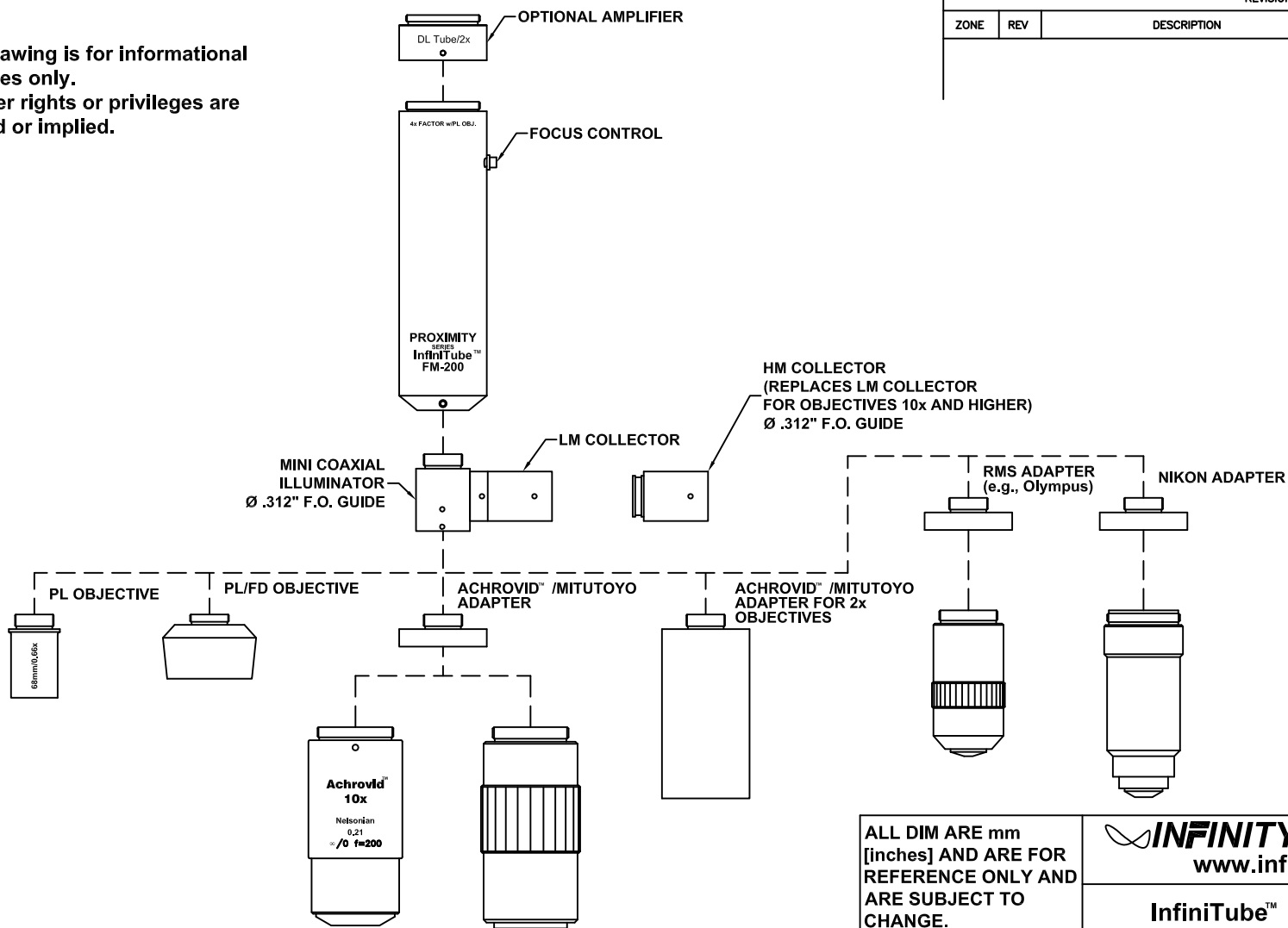
Modified: 05/13/05 MB

INFINITY Photo-Optical Company
www.infinity-usa.com

InfiniTube™ FM-100 SYSTEM DIMENSIONS

| | | | | |
|-----------|----------|---------|-------|----------|
| SIZE B | FSCM NO. | DWG NO. | - | REV B |
| SCALE | NONE | - | SHEET | 1 OF 1 |

This drawing is for informational purposes only.
No other rights or privileges are granted or implied.



| REVISIONS | | | | |
|-----------|-----|-------------|------|----------|
| ZONE | REV | DESCRIPTION | DATE | APPROVED |

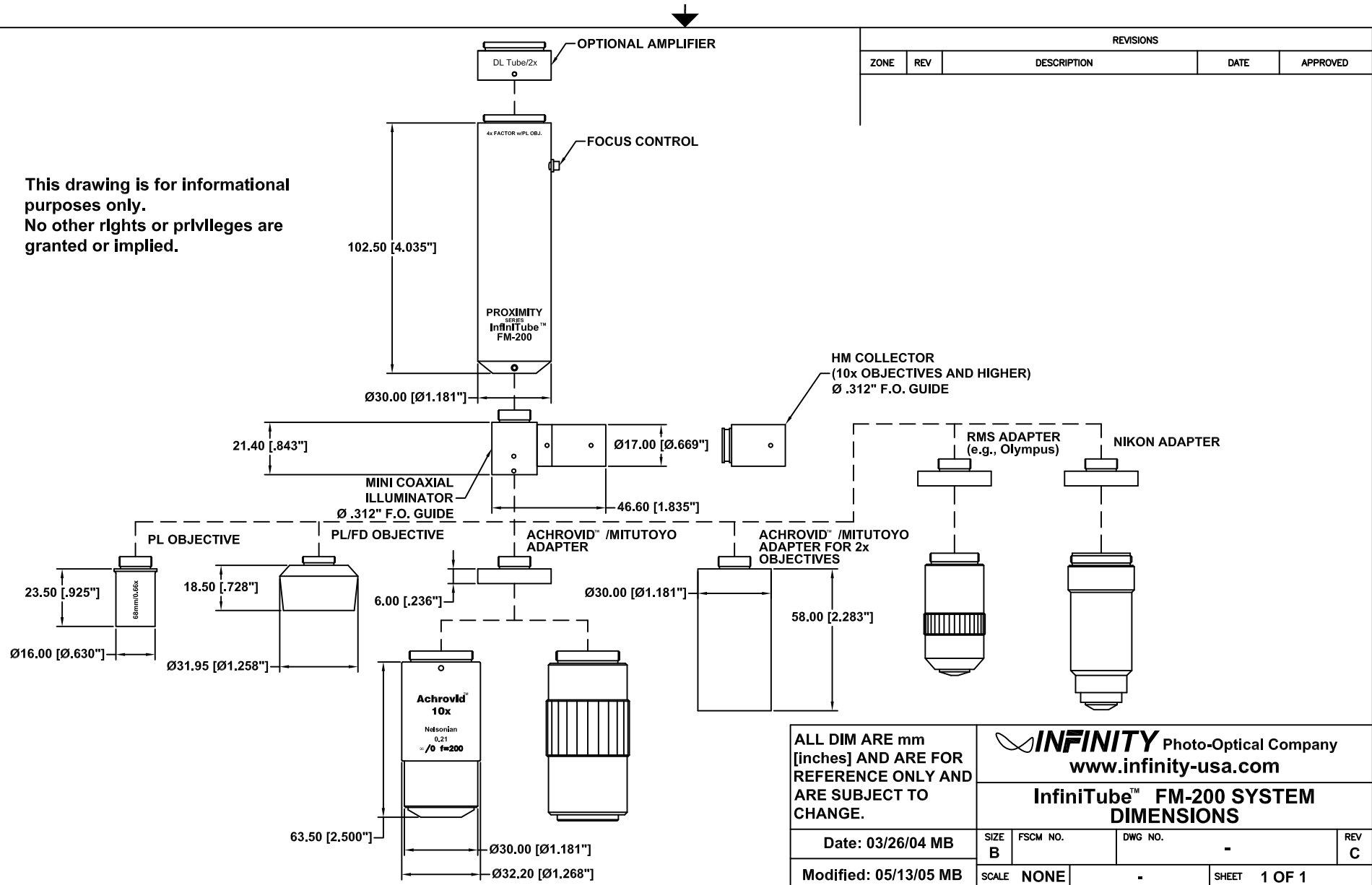
ALL DIM ARE mm
[inches] AND ARE FOR
REFERENCE ONLY AND
ARE SUBJECT TO
CHANGE.

INFINITY Photo-Optical Company
www.infinity-usa.com

InfiniTube™ FM-200 SYSTEM

| | | | | |
|-----------------------|---------------|----------|-----------------|----------|
| Date: 03/26/04 MB | SIZE B | FSCM NO. | DWG NO. - | REV A |
| Modified: 07/29/04 MB | SCALE NONE | - | SHEET 1 OF 1 | |

This drawing is for informational purposes only. No other rights or privileges are granted or implied.



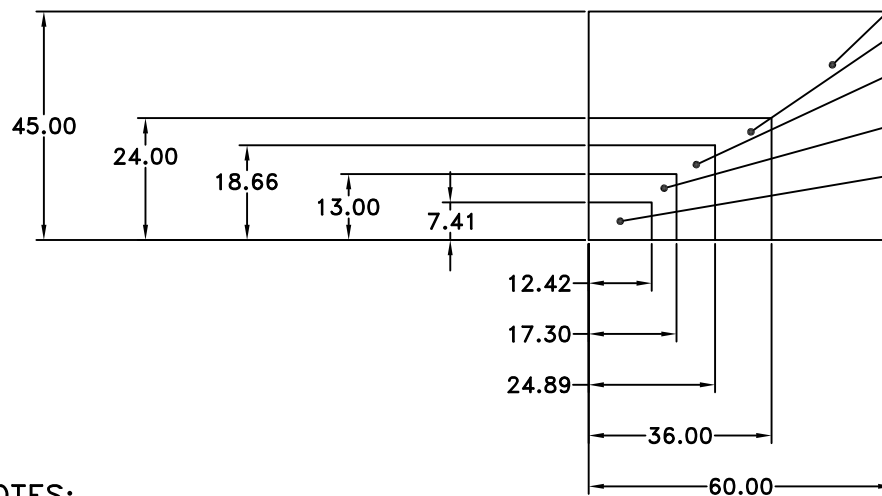
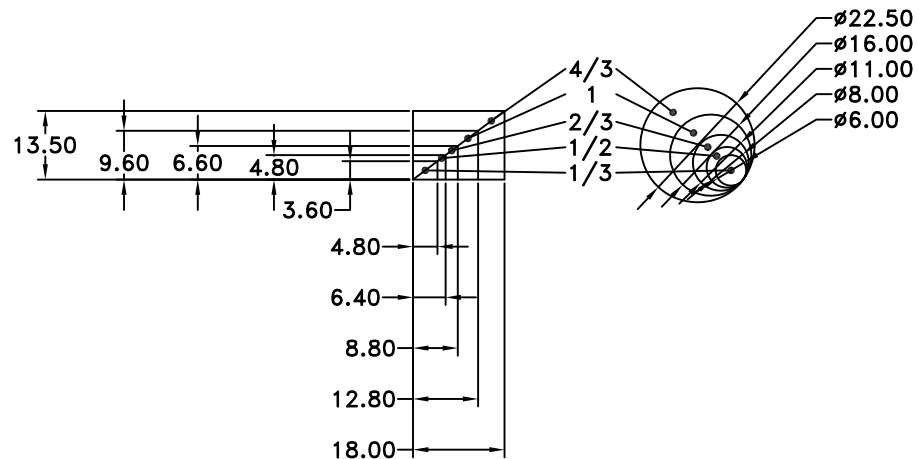
| REVISIONS | | | | |
|-----------|-----|-------------|------|----------|
| ZONE | REV | DESCRIPTION | DATE | APPROVED |

ALL DIM ARE mm
[inches] AND ARE FOR
REFERENCE ONLY AND
ARE SUBJECT TO
CHANGE.

Date: 03/26/04 MB

Modified: 05/13/05 MB

| | | | | |
|---|----------|---------|---------------|-----------------|
| INFINITY Photo-Optical Company www.infinity-usa.com | | | | |
| InfiniTube™ FM-200 SYSTEM DIMENSIONS | | | | |
| SIZE B | FSCM NO. | DWG NO. | - | REV C |
| SCALE NONE | - | SHEET | 1 OF 1 | |



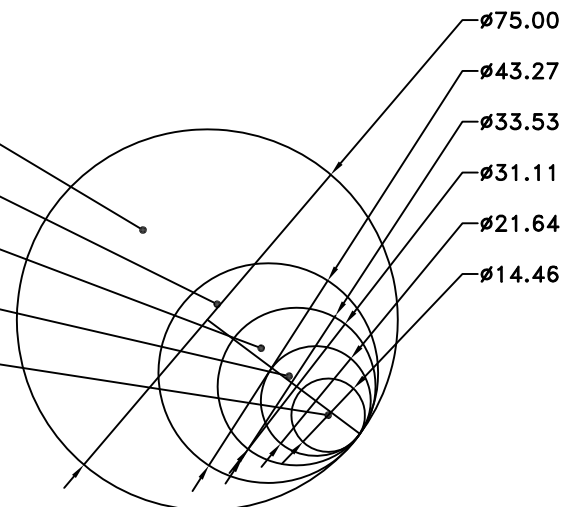
| REVISIONS | | | | |
|-----------|-----|-------------|------|----------|
| ZONE | REV | DESCRIPTION | DATE | APPROVED |
| | | | | |

645D
FULL
FRAME

SUPER
35

FOUR
THIRDS

SUPER
16mm



NOTES:
1. SENSOR SIZE & IMAGE CIRCLE
IN MILLIMETERS.

ALL DIM ARE mm
[inches] AND ARE FOR
REFERENCE ONLY AND
ARE SUBJECT TO
CHANGE.

INFINITY Photo-Optical Company
www.infinity-usa.com

SENSOR SIZE AND IMAGE CIRCLE

Date: 08/27/21 MB

Modified:

SIZE
B

FSCM NO.

DWG NO.

REV

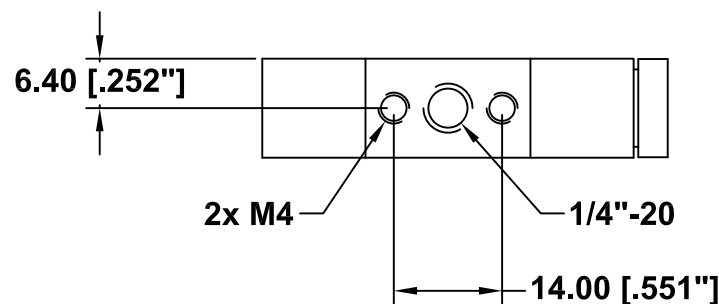
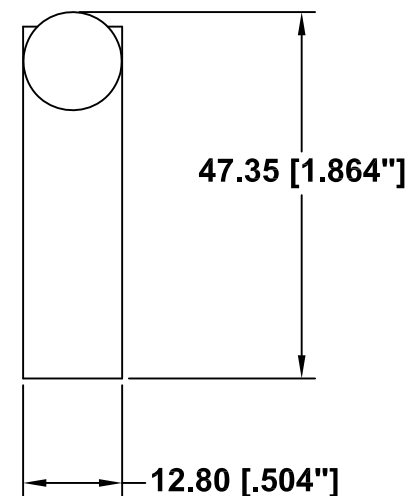
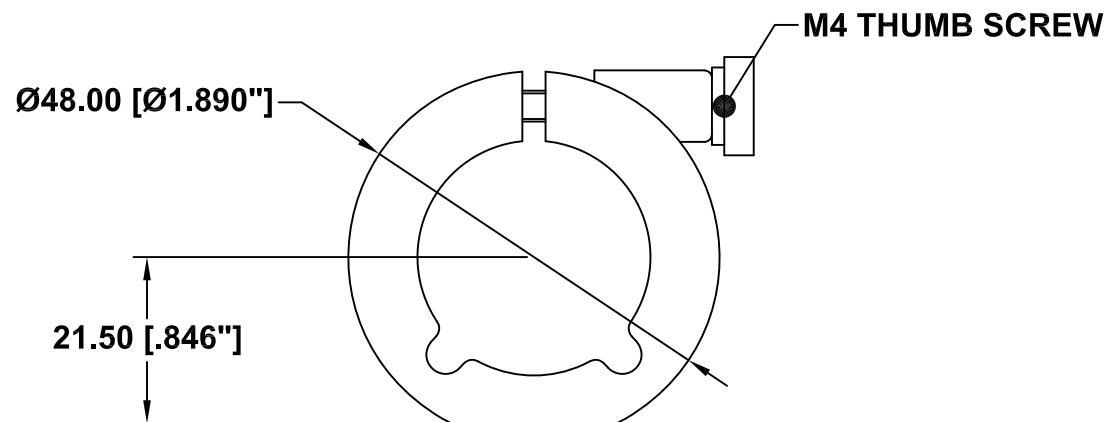
SCALE 1:1

-

SHEET 1 OF 1



| REVISIONS | | | | |
|-----------|-----|-------------|------|----------|
| ZONE | REV | DESCRIPTION | DATE | APPROVED |
| | | | | |



This drawing is for informational purposes only.
No other rights or privileges are granted or implied.

ALL DIM ARE mm
[inches] AND ARE FOR
REFERENCE ONLY AND
ARE SUBJECT TO
CHANGE.

 **INFINITY** Photo-Optical Company
www.infinity-usa.com

SMALL MOUNTING CLAMP

| | | | | | |
|-----------------------|--|-------------------|----------|---------------------------|-----------------|
| Date: 03/19/01 MB | | SIZE A | FSCM NO. | DWG NO. 990 171 | REV A |
| Modified: 04/06/01 MB | | SCALE NONE | | SHEET 1 of 1 | |



INFINITY PHOTO-OPTICAL COMPANY LIMITED WARRANTY

INFINITY PHOTO-OPTICAL COMPANY hereby warrants its products to be free from defects in workmanship or materials for the warranty period set forth below. INFINITY PHOTO-OPTICAL COMPANY, at its option, shall repair or replace the defective product without cost to the purchaser, and such repair or replacement shall be the full extent of this express limited warranty. INFINITY PHOTO-OPTICAL COMPANY shall not be liable for any other damages either direct or consequential.

This warranty is made to the original purchaser, and is effective only on new equipment purchased from INFINITY PHOTO-OPTICAL COMPANY, or a dealer authorized by INFINITY PHOTO-OPTICAL COMPANY to sell the product.

This warranty is valid only when the product is returned to the authorized dealer from whom it was purchased, or returned directly to INFINITY PHOTO-OPTICAL COMPANY, freight prepaid, with proof of date of purchase.

This warranty does not extend to any defect, malfunction or failure caused by misuse, abuse or the use of the product with equipment for which it may not have been intended. Any unauthorized repair voids this warranty.

The warranty period for all products manufactured by INFINITY PHOTO-OPTICAL COMPANY is five (5) years from date of original purchase. Parts or components made or sourced from other manufacturers shall be solely covered by that manufacturer's warranty.

The warranty contained herein is the only warranty made by INFINITY PHOTO-OPTICAL COMPANY. Any implied warranty of merchantability and/or fitness for a particular purpose is expressly excluded from this warranty. INFINITY PHOTO-OPTICAL COMPANY shall not be liable for any expense, loss, incidental or consequential damages which may arise in connection with the use of this equipment. Recovery under this warranty is limited to repair or replacement of the equipment as provided above.

INFINITY PHOTO-OPTICAL COMPANY reserves the right to modify designs, equipment and accessories without notice.

RETURNING INFINITY PRODUCTS FOR SERVICE

Warranty Repairs:

If you have reason to think something is wrong or functioning improperly with your Infinity Photo-Optical product under the terms of the Warranty, please contact us to explain the problem. We can not accept items sent to us without first discussing the problem and providing you with a return merchandise authorization (RMA). Customer is responsible for delivery charges to us. We will examine the product and inform you whether or not the Warranty applies. If so, we will repair/replace the item to factory specifications free of charge. Return delivery charges will be paid by us. If the item(s) is/are deemed out of Warranty, we will advise if repairs can be made at a quoted charge. If customer refuses to authorize a charged repair, item will be returned at the customer's expense.

Repairs of Out of Warranty Products:

Often, we get requests to fix or repair products which are clearly older models out of Warranty. Before attempting to send such to us, please contact Infinity to go over what is desired. It is helpful to send us photos of the product so that we can see if there is a reasonable basis for a repair. Often, older instruments are "inherited" in a department and may have been tampered with by previous users. Infinity products obtained second-hand may have missing parts. After obtaining an RMA as detailed above for Warranty repairs, we will examine the item(s) and provide you with an estimate of charges for repair and return delivery to a level of performance agreed upon. Sometimes it is not possible to cost-effectively repair a product that has been abused or disassembled. A slight cosmetic defect may not affect performance and if so, we will not repair or replace it unless instructed to do so at additional charges. Upon your authorization for us to perform the repair, you will be charged at the price previously quoted for the service and delivery charges involved.