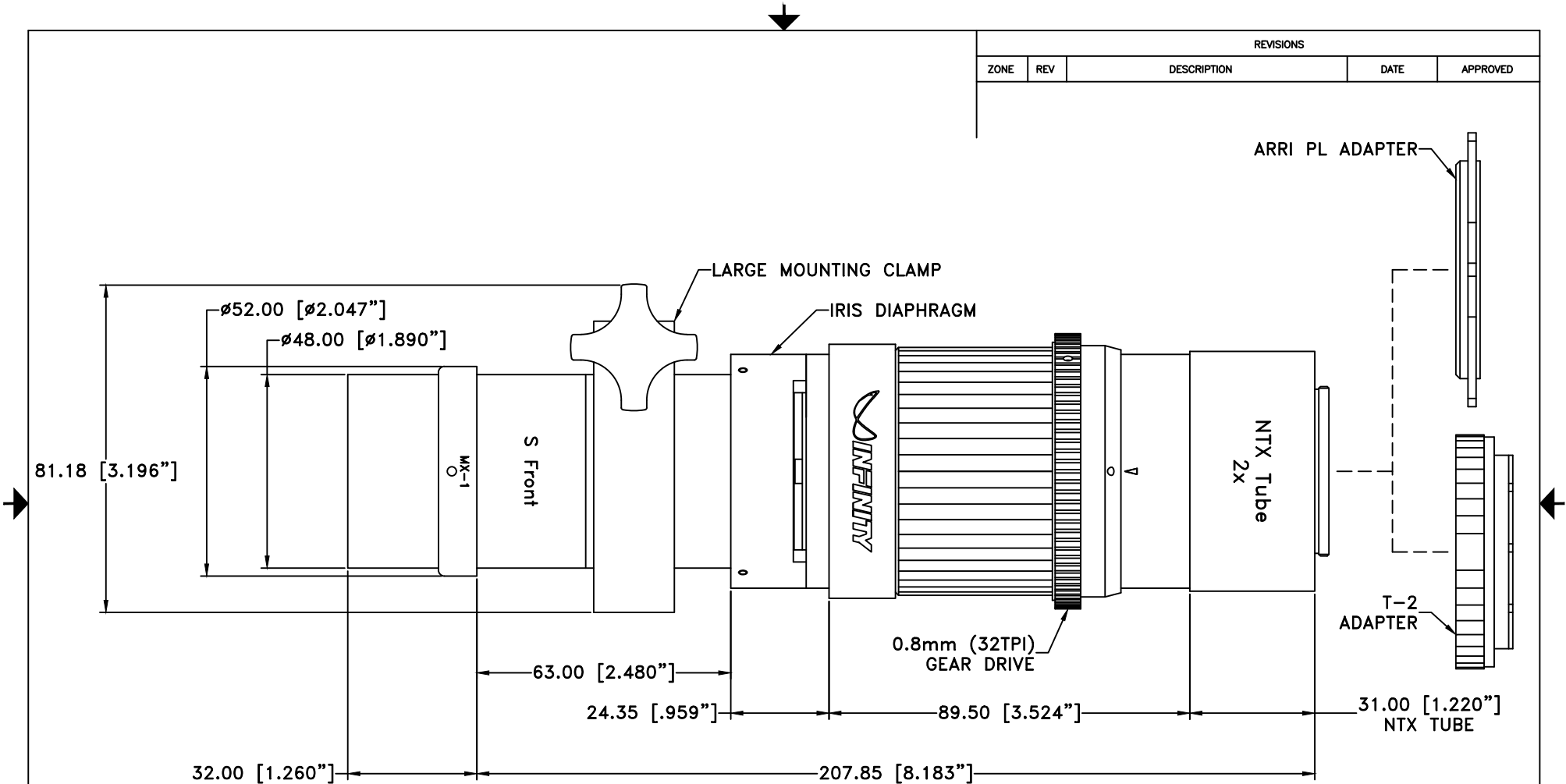


REVISIONS				
ZONE	REV	DESCRIPTION	DATE	APPROVED



81.18 [3.196"]

∅52.00 [∅2.047"]
∅48.00 [∅1.890"]

MX-1

S Front

LARGE MOUNTING CLAMP

IRIS DIAPHRAGM

INFINITY

0.8mm (32TPI)
GEAR DRIVE

NTX Tube
2x

ARRI PL ADAPTER

T-2
ADAPTER

63.00 [2.480"]

24.35 [.959"]

89.50 [3.524"]

31.00 [1.220"]
NTX TUBE

32.00 [1.260"]

207.85 [8.183"]

NOTE:

1. CENTRIMAX SHOWN WITH MX-1 OBJECTIVE.

ALL DIM ARE mm
[inches] AND ARE FOR
REFERENCE ONLY AND
ARE SUBJECT TO
CHANGE.

INFINITY Photo-Optical Company
www.infinity-usa.com

**MODEL K1 CENTRIMAX ROBUSTO
w/NTX TUBE AND T-2 ADAPTER**

Date: 04/04/18 MB	SIZE B	FSCM NO.	DWG NO.	REV -
Modified:	SCALE NONE	-	SHEET 1 OF 1	